



December 2019



DECEMBER EVENTS

- Saturday, December 7**
Wine and Food Pairing 6pm
- Thursday, December 12**
Board of Managers Meeting 5:30pm
- Saturday, December 14**
Holiday Gala, Dinner and Concert 6pm
- Wednesday, December 18**
Holiday Luncheon Buffet 11:30-2pm
- Friday, December 20** Event TBA 6pm
- Sunday, December 22**
Childrens' Holiday Breakfast, Santa, and Dan Butterworth's Puppets 11-2pm
- Monday, December 23**
Last Day to View Little Pictures 12-5pm
- December 25-January 1**
Closed for the Holidays Closed at 3pm Dec. 24

JANUARY EVENTS

- Thursday, January 2**
Club resumes regular hours
- January 6** Winter classes start this week
- Tuesday, January 7**
New Shows Open Maxwell Mays & Mary Castelново Gallery: **Class and Staff Show**
Dodge House Gallery: **New Members 2020**
- Thursday, January 9**
Board of Managers Meeting 5:30pm
- Saturday, January 11**
Reception for Class and Staff and New Members Shows 4-6pm
- Saturday, January 11** Dinner 6pm
- Friday, January 17** Pub Night 6pm
- Monday, January 20**
Martin Luther King Jr. Day Club Closed
- Sunday, January 26**
New Shows Open, Reception 2-4pm
Maxwell Mays: **Susan Allen, Barker, McCullough**
Mary Castelново Gallery: **Weems**
Dodge House Gallery: **Godfray, Pat Allen**
- Friday, January 31**
Members' Night Bob Curley, 100 Things to Do in RI Before You Die 6 pm

PRESIDENT'S MESSAGE

Dear Members,

The 115th Annual Little Picture Show was all a sparkle with color and joy throughout our galleries. As my husband John and I entered the Max Mays Gallery, I knew the selection of artwork for my own collection was not going to be easy. I am sure many shared my dilemma. Standing room only is the best way to describe the evening of the Little Pictures Preview Opening with nearly 300 members and their guests in attendance. With 130 artists represented, many of whom are new artist members, the LPS began with 765 artworks on our gallery walls. I am told by Gallery Manager, Michael Rose, that approximately 350 pieces have found homes, replaced by new work, added daily. Sales (as of this writing) are \$88,845, an overwhelming \$15,044 over the same day total last year! A testament to the high level of work being created by our artist members.

As a painting by the master painter may appear effortless, it is also true of the seamless coordination by a very dedicated PAC staff. None of this happens without a sizable effort by a group of very dedicated staff and volunteers from our Art Exhibition and Installation Committee, chaired by Betsy Zimmerman. Magic in the galleries happens when Gallery Manager Michael Rose and Gallery Assistants Abba Cudney, Brianna Turner and Ari Riva document and organize the hundreds of artworks for the Little Pictures Show and greet the many guests that pass through our doors. Angel Dean joined a welcome new face, PAC Controller Nancy Plunkett, during the opening reception preview and sale to help with wrapping and facilitating sales. Nancy reports that in less than two weeks since the opening sales are at 70% of last year's total sales and says "What a fun night! It was truly amazing to see the excitement and the energy of members and staff coming together for a very successful 115th Little Pictures Preview!"

Thanks to Kathy Hodge DeVault in Communications and all she brings to all of our branding, which becomes an important face to the community of the Providence Art Club. Always with a smile, thanks to special maintenance team Rui Pimental and Alex Mello who do most of the heavy lifting and keep our galleries in tip top shape, and Maria Pereira adds her special touch keeping the Club neat and tidy.

With so many holiday festivities, dinners, and events, it's hard to keep track of the many moving parts. We applaud GM Seb Borges and his dedicated staff, including Chef Drew, Alda Borges and our kitchen staff, who do it all with great style and attention to detail that we have all come to know and appreciate. Where better to celebrate the holiday season than by attending our many activities and dinners?

In closing, our employees/staff serve us all year round, please remember and give thanks to them in a very tangible way for their faithful service. We are nearing 40% contributions to the Holiday Employee Fund. Let's get to 100% and give them the best Holiday ever.

May the treasures and traditions of the holidays fill your heart with hope and happiness and the warmth of family and friends.

Warmly,

Nancy Gaucher-Thomas
President, Providence Art Club

DECEMBER EVENTS AT THE PROVIDENCE ART CLUB



WINE & FOOD PAIRING

Saturday, December 7, 6pm

Sriracha Glazed Roasted Sirloin Crostini
*Served with Affine Blue Cheese Mousse,
and Red Wine Caramelized Onions.*

Le Berceau Blanquette de Limoux NV or
Giapoza Cabernet Sauvignon '17

Beef Tenderloin Sliders
*Herb Roasted Tenderloin with Red Pepper Pesto.
Served on a House Made Brioche.*

J Mourat Collection Rose '18 or
Trere "Lona Bona" Sangiovese

Lobster Wellington
*Maine Lobster with a Tarragon Reduction
Wrapped in Golden Brown Puff Pastry.*
Greenvale Vineyards Chardonnay '17 or
Messmer Pinot Noir 1L '15

Korean BBQ Tempura Shrimp
*Served with Asian Dipping Sauce, Wasabi Aioli,
and Pickled Ginger.*

Teutonic Jazz Odyssey '18
(Riesling, Gewurz, Chardonnay) or
Bedrock "The Whole Shebang"
Red Blend 12th Cuvee

Smoked Muscovy Duck Toasts
*Crispy Toasts with Buttercup Squash, Sliced Smoked
Duck Breast, Micro Arugula, Chives, Crispy Chicken Skin
Mascarpone Cheese & Pomegranate Molasses.*

Valckenberg Gewurztraminer '17 or
Glatzer Blaufrankisch '17

Baby Lamb Lollipops
Grilled Baby Lamb Chops with Mint Chimichurri Sauce
Casteller Cava Rose or Legado del
Moncayo Garnacha "Old Vines" '17

Members and Guests \$45 ++

For more full menus and information on
events go to www.providenceartclub.org
Register at 401-331-1114 ext. 3
or reservations@providenceartclub.org

Vegetarian, vegan, and gluten free meals always
available. All menus are subject to change.

++Tax and House Charge

HOLIDAY DINNER & CONCERT

Saturday, December 14, 6pm

PASSED HORS D'OEUVRES

Jumbo Shrimp Cocktail
Lobster Wellington
Butternut Squash Panna Cotta

TO BEGIN WITH

Holiday Eggs Copenhagen
*Scotched Egg Wrapped with Smoked Pastrami
Salmon over a Bed of Sautéed Spinach.
Served with Sauce Bearnaise & Port Wine Syrup.*

INTERMEZZO

Chocolate Citrus Butter Mint Sorbet

FOLLOWED BY

CAB Boneless Rib-Eye Filet
*Center-Cut Certified Angus Beef Rib-Eye Filet.
Served with Black Pepper Bacon and
Honey Bordelaise Sauce, Starch & Vegetable.*

Poached Baby Carrots, Braised Chestnuts,
& Baby Brussels Sprouts
Vichyssoise Croquettes

TO FINISH

Individual Yule Log

MUSICAL ENTERTAINMENT

Classic Holiday Selections by
Kimberly Hale

Members and Guests \$80 ++

ANGELL'S LANE

*A perfect spot to gather with fellow
members and your holiday guests
Tuesday-Saturday from 3 till 8pm.*



*Relax by the fire with
beverages, cocktails
and a selection of
light snacks from
our Bar Menu.*

Call to confirm hours.

HOLIDAY LUNCHEON BUFFET

Wednesday, December 18, 11:30-2pm

SOUP & SALAD STATION

Roasted Apple & Butternut Squash Soup
Baby Arugula Salad

ENTRÉE

Grilled Swordfish & Salmon
Roasted Holiday Buddha Ball Ham
Chicken Francese

Roasted Breast of Turkey

*Thyme Roasted Sweet Potatoes,
Broccoli, Zucchini, Summer Squash, & Red Pepper.*

DESSERT

Assorted Seasonal Dessert Buffet

Members and Guests \$35++

CHILDRENS' HOLIDAY PARTY

Sunday, December 22

BREAKFAST BEFORE SANTA & DAN BUTTERSWORTH'S PUPPETS

11am BREAKFAST

Fluffy Scrambled Eggs
Silver Dollar Buttermilk Pancakes
Crispy Bacon | Breakfast Pork Sausage
*Holiday Breakfast Potatoes, Assorted Danish & Muffins
Coffee, Tea, Assorted Juices.*



12pm SANTA ARRIVES

1pm PUPPET SHOW

*Santa's Visit and
Puppet Show are Free*

Breakfast is \$10 for Children 10 and under, \$15 for Adults



JOAN BOGHOSSIAN'S BIRTHDAY CHALLENGE

Thank You to
Suzanne Reeves and Gail Ginnetty
for their generous donations to
Joan Boghossian's
Birthday Challenge.
Happy Birthday, and best wishes for a
wonderful year of art and camaraderie!

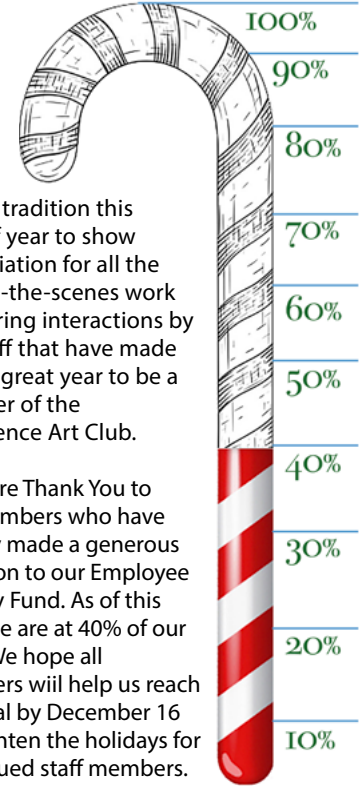
WELCOME NEW MEMBERS

Victoria I. Conte, Patron
Rebecca Hamilton Stockdill, Patron
Nanci Adams, Arts Professional
Transfer of Status
Hollybeth Runco to Exhibiting Artist



Happy Holidays
to all our
members and their
loved ones
and Best Wishes
for Happiness,
Health and
Adventure
in the
New Year!

A gentle reminder during
this season of thanks,
and giving ...

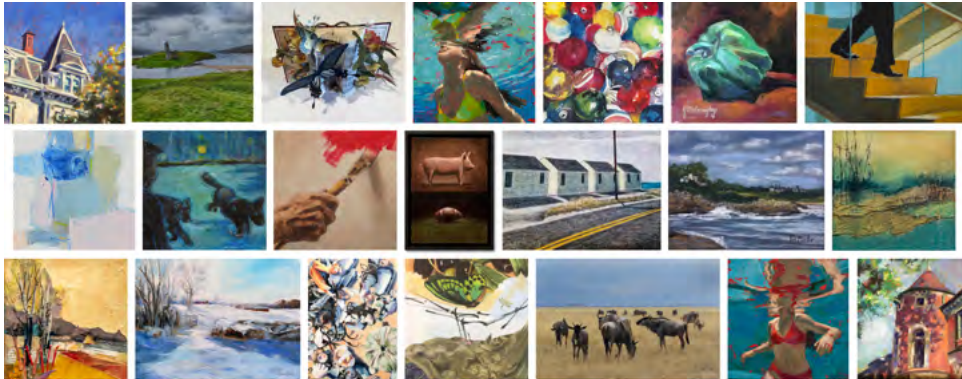


It's our tradition this
time of year to show
appreciation for all the
behind-the-scenes work
and caring interactions by
our staff that have made
2019 a great year to be a
member of the
Providence Art Club.

A sincere Thank You to
our members who have
already made a generous
donation to our Employee
Holiday Fund. As of this
date, we are at 40% of our
goal. We hope all
members will help us reach
our goal by December 16
to brighten the holidays for
our valued staff members.

IN THE GALLERIES

Though December 23 • Extended Gallery Hours 12-5, 7 days a week



115TH LITTLE PICTURES SHOW & SALE

This year's Little Pictures Show has been so
successful that new work is being added daily.
If you haven't yet seen the show, be sure to
stop in, you are sure to be impressed by your
fellow members' beautiful and accomplished
work. If you've already been, it's worth a revisit
— so much is new it's like a whole new show!
It's also a great way to show off our Club to
your holiday guests.

Galleries Open 7 Days 12-5
through December 23

Over 600 works of art sized at 16" x 16" or less
Priced at no more than \$300

Call for Entries

Class & Staff Show Any member who has taken a
class or workshop during 2019 may submit up to two
works (no more than one per class). Works substan-
tially aided by the instructor and copies of original
artworks are not allowed. Any photographs utilized in
work must be original and the property of the artist.

New Year, New Members Each new Exhibiting
Artist Member admitted to the Club through
November of 2019 may submit up to two works.

Submissions for both shows must be delivered to
the gallery January 2 and 3, between the hours
of 12-4pm. Submissions may also be delivered by
appointment on January 4 and 5.

Winter Members' Exhibition (\$5,000 in Prizes!)
Each Exhibiting Artist Member may submit one
work. Submissions must be delivered to the gallery
February 10-14, between the hours of 12-4pm.

For all submissions: All works must be properly
prepared for installation and professionally framed, or
presented on gallery wrapped canvas with finished
edges. Works should be wired with D-Rings for instal-
lation. All works must be for sale, with the Club taking
a 25% commission on any sold work. Works may be
sized at no more than 42" x 42" including the frame.

For questions about these exhibitions or regarding
preparing your work, please contact Gallery Manager
Michael Rose at 401-331-1114 ext. 5, or via email at
Michael@providenceartclub.org. Our Gallery Staff are
always happy to assist you in preparing for shows.

PROVIDENCE ART CLUB CALENDAR OF EVENTS

D
E
C
E
M
B
E
R

SUNDAY	MONDAY	TUESDAY	WEDNESDAY	THURSDAY	FRIDAY	SATURDAY
1	2	3	4	5	6	7
115th Little Pictures Show and Sale						
	Last Week of Fall Classes					Wine and Food Pairing 6pm
8	9	10	11	12	13	14
115th Little Pictures Show and Sale						
				Board of Managers Meeting 5:30pm		Holiday Gala Dinner & Concert 6pm
15	16	17	18	19	20	21
115th Little Pictures Show and Sale						
			Holiday Luncheon Buffet 11:30-2pm		Event TBA 6pm	
22	23	24	25	26	27	28
Little Pictures Show and Sale						
Breakfast before Santa and Puppets 11am-2pm	Last Day Little Pictures Show! 12-5pm	Christmas Eve Club Closes 3pm	Christmas Day Club Closed	Club Closed	Club Closed	Club Closed
29	30	31	1	2	3	4
Club Closed	Club Closed	New Year's Eve Club Closed	Happy New Year! Club Closed			

J
A
N
U
A
R
Y

SUNDAY	MONDAY	TUESDAY	WEDNESDAY	THURSDAY	FRIDAY	SATURDAY
29	30	31	1	2	3	4
Club Closed	Club Closed	New Year's Eve Club Closed	Happy New Year! Club Closed	Club resumes regular hours		
5	6	7	8	9	10	11
		Class and Staff and New Members Exhibition				
	Winter Classes Start this week			Board of Managers' Meeting 5:30pm		Shows Open Receptions 4-6pm Class and Staff and New Members Dinner 6pm
12	13	14	15	16	17	18
Class and Staff and New Members Exhibition						
					Pub Night 6pm	
19	20	21	22	23	24	25
Class and Staff and New Members Exhibition						
	Martin Luther King Jr. Day Club Closed					
26	27	28	29	30	31	1
Shows Open Receptions 2-4pm Allen, Barker, McCullough, Veems, Godfrey, Allen					Members' Night 6pm	