



December 2018



## DECEMBER EVENTS

- Saturday, December 1**  
Wine Tasting, Angell's Lane 5-8pm
- Saturday, December 8**  
Holiday Dinner and Concert 6-8pm
- Thursday, December 13**  
Board of Managers Meeting 5:30pm
- Sunday, December 16**  
Children's Holiday Party 2-4pm
- Wednesday, December 19**  
Holiday Luncheon Buffet 11:30-2pm
- Sunday December 23**  
Last Day to View Little Pictures 12-5pm
- Monday and Tuesday December 24-25**  
Closed for the Holidays
- Monday and Tuesday December 31-January 1**  
Closed for the New Year's Holiday

## JANUARY EVENTS

- Tuesday, January 1** New Year's Day Club Closed
- Saturday, January 5**  
New Shows Open, Reception 4-6pm  
Maxwell Mays & Mary Castelnovo Gallery:  
Class and Staff Show  
Dodge House Gallery: **New Members 2019**
- Saturday, January 5** Pub Night 6pm
- January 7** Print Classes Begin
- Thursday, January 10**  
Board of Managers Meeting 5:30pm
- January 14** Masiello Studio Classes Begin
- Wednesday, January 16**  
Pop Up, Drop In Event TBA 5:30pm
- Monday, January 21**  
Martin Luther King Jr. Day Club Closed
- Saturday, January 26**  
New Shows Open, Reception 4-6pm  
All Galleries **Winter Members' Exhibition**
- Saturday, January 26** A la Carte Dinner 6pm
- Wednesday, January 30**  
RISCA: Artist as a Small Business 6:30pm

## PRESIDENT'S MESSAGE

Dear Members,

We share a **bunch of fun facts** about the 114th Annual Little Pictures Show. It takes an enormous team effort, with the Club's staff and over 160 member volunteers, to make this annual event a success. This year there are **124** artists — over **1,000** works of art, exceeding previous years and including many by first-time participant members.

Our Art Exhibition & Installation Committee, a group of very dedicated member volunteers chaired by **Betsy Zimmerman**, spent many hours hanging all the work on view.

Gallery Manager **Michael Rose** was the conductor bringing it all together with his amazing staff. Gallery Assistants **Abba Cudney**, **Brianna Turner**, and **Jenna Lavallee** spent days labeling, documenting, and organizing the hundreds of Little Pictures artworks.

Our maintenance team **Rui Pimental** and **Alex Mello** repainted our exhibition pedestals, hung the Little Pictures Banner, and will decorate the Club's facade for the Holiday Season. **Maria Pereira** keeps the galleries neat and tidy, as usual, even as we put over 700 holes in the walls.

**Audrey Monahan** and the House Committee take great care in decorating the mantel-pieces for the holidays throughout the Club and work hard to keep our historic buildings looking wonderful, warm, and inviting.

**Kathy Hodge DeVault** redesigned our signage to reflect the Club's branding and character, and created a Little Pictures page on the website with info about the show and a great time lapse install from the 2017 exhibition. The Little Picture Red Carpet was such a hit last year that Kathy and the Marketing Committee brought it back again for 2018.

Our opening weekend was a great success due to our generous staff members **Chef Drew**, **Alda Borges**, and **Angel Dean**, who helped wrap sold artworks and facilitate sales.

Behind it all, with a warm smile, General Manager **Seb Borges** keeps this great undertaking on track and moving forward without missing a beat.

Little Pictures remains, to our knowledge, the largest and oldest exhibition of its kind in the nation with work in a wide range of 2-D and mixed media, photography, glass, jewelry, and sculpture. All works are 16" x 16" or less, and priced no more than \$300. There are many other "little picture" shows in the area, but we genuinely think ours is the BEST in terms of variety, range of prices, and accessibility - **The show is open 7 days, 12-5pm, through December 23.**

**As the holidays approach, let's remember and give thanks to our employees/staff at the Providence Art Club in a very tangible way for their faithful service. Please express your gratitude by contributing to the Holiday Employee Fund.**

Kelly Milukas, President

# DECEMBER EVENTS AT THE PROVIDENCE ART CLUB



## ANGELL'S LANE WINE TASTING

Saturday, December 1, 6pm

### WHITES

Rebel Coast Sunday Funday (California)  
Riff Pinot Grigio (Italy)  
Saint-Peyre Picpoul de Pinet (France)

### REDS

Mi Terruño Expresión Malbec (Argentina)  
OZV (Old Zin Vines) Zinfandel (California)  
Rebel Coast Reckless Love (California)

### MENU

Artisanal Cheese  
Charcuterie & Fruit Display  
House Made Potato Chips  
Tuscan White Bean Hummus & Crudite  
Chicken Liver Pate with Port Gelee

*Little Pictures Show*  
*Gallery Hours Extended till 8pm*

Members and Guests \$18 ++

For more full menus, information on events and to register:  
[www.providenceartclub.org](http://www.providenceartclub.org)  
401-331-1114 ext. 3  
[reservations@providenceartclub.org](mailto:reservations@providenceartclub.org)

Vegetarian, vegan, and gluten free meals are always available.  
All menus are subject to change.

## HOLIDAY DINNER & CONCERT

Saturday, December 8, 6pm

### PASSED HORS D'OEUVRES

Jumbo Shrimp Cocktail | Beef Wellington  
Roasted Butternut Squash Cheese Fritters

### TO BEGIN WITH

Julienne Pear Arugula &  
Crispy Prosciutto Salad

### INTERMEZZO

Bitter Lime Jelly, Pomegranate Sorbet,  
Cherry Almond Brittle

### FOLLOWED BY LAND & SEA

Prime Rib Filet & Scottish Salmon Pinwheel  
Center-Cut Prime Rib

### STARCH & VEGETABLE

Charred Campari Tomatoes,  
Baby Zucchini & Spaghetti Squash  
Horseradish Beet Mashed Potato

### TO FINISH

Modern Opera Cake Plate

### MUSICAL ENTERTAINMENT

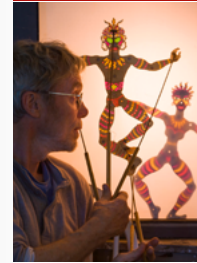
The Two Tabers

*A piano duo like no other! Their high energy and great musicianship captivate audiences wherever they perform.*

Members and Guests \$80 ++

## CHILDREN'S HOLIDAY PARTY

Sunday, December 16, 2-4pm • FREE



### The Magic Winter Carnival

Dan Butterworth's Puppetry has taken him from performing locally at fairs and schools to an international career.

Bring the little ones, and together we will bring to life characters that will dance on the stage and spill off into the audience.

This is a **free event**. There will be cookies & punch, and Santa will visit and deliver some small gifts. Just let us know how many to expect.

Call 331-1114 ext. 3, email [reservations@providenceartclub.org](mailto:reservations@providenceartclub.org) or reserve through our website.

## HOLIDAY LUNCHEON BUFFET

Wednesday, December 19, 11:30-2pm

### SOUP & SALAD STATION

Roasted Apple & Butternut Squash Soup  
Baby Arugula Salad

### ENTRÉE

Grilled Swordfish & Salmon  
Roasted Holiday Buddha Ball Ham  
Lemon Chicken

Roasted Breast of Turkey  
Herb Roasted Mixed Colored Potatoes  
Roasted Green & Wax Beans,  
Carrots, & Red Pepper

### DESSERT

Assorted Seasonal Dessert Buffet

Members and Guests \$35++

## NEW CLASSROOM LIGHTING

*"In nature, light creates the color. In the picture, color creates the light"* —Hans Hoffman

As artists we learn the lighting of a subject is often one of the most important aspects of the composition. No matter what the subject, lighting brings a tone and depth to a piece.

Over the past several years lighting in the classroom has been a challenge. A significant amount of discussion took place with

consultants to ensure the best outcome and we are very happy to report that construction of a new lighting system in the studio classroom will be underway January 7 - 11.

The new \$60,000 system includes lights easily adjusted for varying situations and an artist's desired result. A light-blocking shade will be installed over the large window that will help attain the lighting effect appropriate for any given program.

## DONATIONS & BEQUESTS

— *A Gift to our Founders* —

The Founders of the Providence Art Club left a legacy in the name of "art culture", to be preserved by generations to come. We now look to our members for its future.

In recent years Club members have quietly informed us of their intention to include a gift to the Providence Art Club in their estate planning. These gifts present a lasting tribute and provide an estate tax deduction while having a tremendous impact on our ability to support our historic buildings, education programs, and future sustainability planning.

Consider making a meaningful and long-lasting charitable contribution to the Providence Art Club, a 501(c)3 federally approved non-profit organization.

If you would like information on how to include the Club in your will, estate plan, or a gift from your required minimum distributions, please contact us to learn more.

Kelly Milukas, President

## Employee Holiday Fund

As the holidays approach, it is the time of year and opportunity to thank our employees and staff at the Providence Art Club. Since we have a "no tipping" policy, now is the time to express our gratitude in a very tangible way for their faithful and outstanding service each and every day.

If you are a member who benefits from weekly or even daily visits to the Club please consider this in your gift giving amount by Dec. 14, and know that any amount is appreciated and benefits all of our amazing staff.

May the spirit of the season be a blessing to you and yours.

With gratitude,  
Kelly Milukas, President

## IN APPRECIATION

We wish to express our deepest gratitude to

### Dr. Albert Glucksman

for the generous financial support for a Scholarship Award Fund to help students to achieve their goals while pursuing a career in the arts.

### Providence Art Club Student Scholarship Exhibit Gift: \$45,000

PAC has established a student scholarship program (restricted) in the amount of \$9,000\* to be awarded annually for a period not less than 5 years to a student of a Rhode Island college or university, including RISD.

The annual Scholarship Award is to be comprised of a \$1,000 cash distribution and a one-year Junior Artist Membership at the Providence Art Club to the top award winner. Additional monetary awards (2nd place \$500 and 3rd place \$250) will also be given. PAC will determine the recipient of the Scholarship and announce the award prominently.

The program will also include a reception and program for students, their families, professors and the public. Funds for the Scholarship, Junior Artist Membership at the Club, and advertising will be distributed annually for the PAC administered Student Scholarship Exhibit Program.

*\*Budget subject to annual review.*

## WELCOME NEW MEMBERS

Exhibiting Artists: Roberta Wexler Ehrlich, Mark Kaplan, Susan Hunter Petree

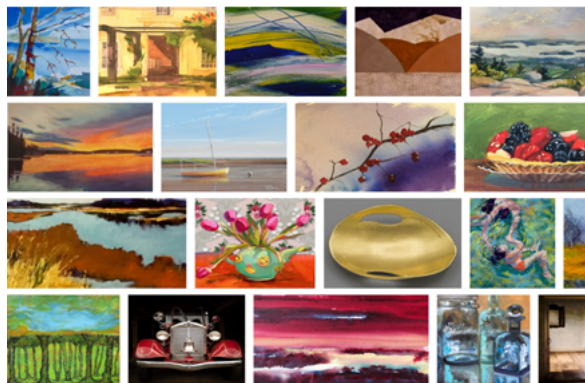
Transfer of Status to Exhibiting Artist: Donald Blough, Carolyn Winter

## IN THE GALLERIES

Through December 23 • Extended Gallery Hours 12-5, 7 days a week

Call for Entries

# LITTLE PICTURES SHOW & SALE



GALLERIES OPEN 7 DAYS 12-5 THROUGH DECEMBER 23

Over 600 works of art sized at 16" x 16" or less

Priced at no more than \$300. • New Work Arriving Daily



### ART EXHIBITION RECIPROCITY: LOOKING BACKWARD AND MOVING FORWARD

*The Providence Art Club at the St. Botolph Club*

ON VIEW NOVEMBER 28, 2018 - JANUARY 11, 2019

St. Botolph Club, 199 Commonwealth Avenue, Boston, MA

**Class & Staff Show** Any member who has taken a class or workshop during 2018 may submit up to three works (no more than one per class). Works substantially aided by the instructor and copies of original artworks are not allowed. Any photographs utilized in work must be original and the property of the artist. Submissions must be delivered to the gallery January 2 - 4, between the hours of 12-4pm.

**New Year, New Members** Each new Exhibiting Artist Member admitted to the Club through November of 2018 may submit up to three works. Submissions must be delivered to the gallery January 2 - 4, between the hours of 12-4pm.

**Winter Members' Exhibition** (\$5,000 in Prizes!) Each Exhibiting Artist Member may submit one work. Submissions must be delivered to the gallery January 22 - 25, between the hours of 12-4pm.

**For all submissions:** All works must be properly prepared for installation. Works should be professionally framed, or presented on gallery wrapped canvas with finished edges. Works should be wired with D-Rings for installation. All works must be for sale, with the Club taking a 25% commission on any sold work. Works may be sized at no more than 42" x 42" including the frame.

For questions about these exhibitions or regarding preparing your work, please contact Gallery Manager Michael Rose at 401-331-1114 ext. 5, or via email at Michael@providenceartclub.org. Our Gallery Staff are always happy to assist you in preparing for shows.

# PROVIDENCE ART CLUB CALENDAR OF EVENTS

DECEMBER

MONDAY	TUESDAY	WEDNESDAY	THURSDAY	FRIDAY	SATURDAY
25	26	27	28	29	30
114th Little Pictures Exhibition and Sale					
					Wine Tasting Angell's Lane 5-8pm, Extended Gallery Hours
2	3	4	5	6	7
114th Little Pictures Exhibition and Sale					
					Holiday Dinner and Concert 6-8pm
9	10	11	12	13	14
114th Little Pictures Exhibition and Sale					
				Board of Managers Meeting 5:30pm	
16	17	18	19	20	21
Little Pictures Exhibition and Sale					
Children's Holiday Party 2-4pm			Holiday Luncheon Buffet 11:30-2pm		
23	24	25	26	27	28
Last day Little Pictures Exhibition and Sale	Club closed Monday and Tuesday for the Holiday Happy Holidays!				
30	31	1	2	3	4
	Club closed Monday and Tuesday for the Holiday				

JANUARY

SUNDAY	MONDAY	TUESDAY	WEDNESDAY	THURSDAY	FRIDAY	SATURDAY
30	31	1	2	3	4	5
	Club closed Monday and Tuesday for the Holiday Happy New Year!					Receptions - New Members, Class & Staff 4-6pm  Pub Night 6pm
6	7	8	9	10	11	
New Members, Class & Staff Exhibitions						
	Print Classes Start this Week	New Lighting Installed Masiello Studio		Board of Managers Meeting 5:30pm		
13	14	15	16	17	18	19
New Members, Class & Staff Exhibitions						
	Masiello Studio Classes Start this Week		Pop Up, Drop in Event			
20	21	22	23	24	25	26
New Members, Class & Staff Exhibitions						
	Club Closed Martin Luther King Day					Winter Members' Exhibition Reception 4-6pm à la Carte Dinner 6pm
27	28	29	30	31	1	2
Winter Members' Exhibition						
			RISCA: Artist as a Small Business 6:30pm			